



UNIVERSITÀ  
CATTOLICA  
del Sacro Cuore



# Life after ERC

What's New and What's Next in the LiLa Knowledge Base

Marco Passarotti

*SwissText 2025*  
Winterthur, May 14-15, 2025



This project has received funding from the European Research Council (ERC) under the European Union's Horizon 2020 research and innovation programme - Grant Agreement No. 769994.

## Fundamentals of LOD and Introduction to LiLa

Mission and Architecture

## What's New

Language Resources

Lemma Bank Query Interface

LiLa Search Platform

SPARQL Access Point

TextLinker

## What's Next

Discussion and Conclusion

## Fundamentals of LOD and Introduction to LiLa

Mission and Architecture

### What's New

Language Resources

Lemma Bank Query Interface

LiLa Search Platform

SPARQL Access Point

TextLinker

### What's Next

Discussion and Conclusion

We have built and collected (for Latin and other languages):

We have built and collected (for Latin and other languages):

- ▶ Textual Resources

We have built and collected (for Latin and other languages):

- ▶ Textual Resources
- ▶ Lexical Resources

We have built and collected (for Latin and other languages):

- ▶ Textual Resources
- ▶ Lexical Resources
- ▶ NLP Tools

We have built and collected (for Latin and other languages):

- ▶ Textual Resources
- ▶ Lexical Resources
- ▶ NLP Tools

Scattered and unconnected



## ERC Consolidator Grant 2018-2023

A collection of multifarious, interoperable linguistic resources  
described with the same vocabulary for knowledge description  
(by using common data categories and ontologies)

**Interlinking as a Form of Interaction**

# The Linked Data Principles

...just to be FAIR



# The Linked Data Principles

...just to be FAIR



- ▶ Use URIs for things (e.g. an entry in a lexicon, a token in a corpus)

# The Linked Data Principles

...just to be FAIR



- ▶ Use URIs for things (e.g. an entry in a lexicon, a token in a corpus)
- ▶ Use HTTP URIs to allow people (and machines) to look up things

# The Linked Data Principles

...just to be FAIR



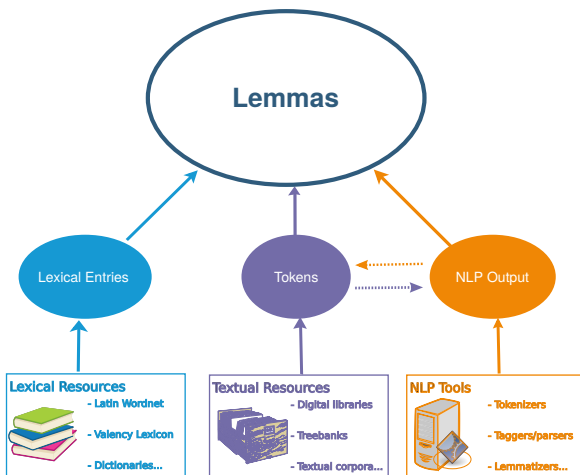
- ▶ Use URIs for things (e.g. an entry in a lexicon, a token in a corpus)
- ▶ Use HTTP URIs to allow people (and machines) to look up things
- ▶ Use web standards to represent/query (meta)data, such as RDF and SPARQL

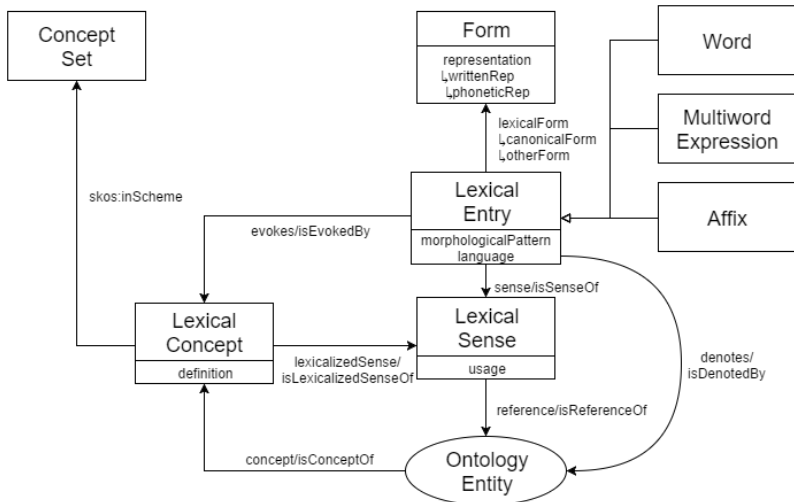
# The Linked Data Principles

...just to be FAIR



- ▶ Use URIs for things (e.g. an entry in a lexicon, a token in a corpus)
- ▶ Use HTTP URIs to allow people (and machines) to look up things
- ▶ Use web standards to represent/query (meta)data, such as RDF and SPARQL
- ▶ Include links to other URIs







## Fundamentals of LOD and Introduction to LiLa

Mission and Architecture

### What's New

Language Resources

Lemma Bank Query Interface

LiLa Search Platform

SPARQL Access Point

TextLinker

### What's Next

Discussion and Conclusion

## Resources connected so far

<https://lila-erc.eu/data-page/>

- ▶ **Lemmas** in the Lemma Bank: approx. 170K (Written Reps: approx. 270K)
- ▶ **Lexical Entries** in Lexical Resources: approx. 170K
- ▶ **Tokens** in Textual Resources: approx. 12M
- ▶ **Triples**: approx. 140M

## Fundamentals of LOD and Introduction to LiLa

### Mission and Architecture

## What's New

Language Resources

Lemma Bank Query Interface

LiLa Search Platform

SPARQL Access Point

TextLinker

## What's Next

Discussion and Conclusion

# Lemma Bank Query Interface

To access the lemma datasheets and visualize the triples



## Lemma Bank Query Interface

<https://lila-erc.eu/query/>

## Fundamentals of LOD and Introduction to LiLa

### Mission and Architecture

## What's New

Language Resources

Lemma Bank Query Interface

**LiLa Search Platform**

SPARQL Access Point

TextLinker

## What's Next

Discussion and Conclusion

## LiLa Search Platform

<https://lila-erc.eu/LiLaLisp/>

## Fundamentals of LOD and Introduction to LiLa

### Mission and Architecture

## What's New

- Language Resources
- Lemma Bank Query Interface
- LiLa Search Platform
- SPARQL Access Point**
- TextLinker

## What's Next

- Discussion and Conclusion

## SPARQL Access Point

<https://lila-erc.eu/sparql/>



## Fundamentals of LOD and Introduction to LiLa

### Mission and Architecture

## What's New

- Language Resources
- Lemma Bank Query Interface
- LiLa Search Platform
- SPARQL Access Point
- TextLinker**

## What's Next

- Discussion and Conclusion

## TextLinker

<https://lila-erc.eu/LiLaTextLinker/>

## Fundamentals of LOD and Introduction to LiLa

### Mission and Architecture

## What's New

- Language Resources
- Lemma Bank Query Interface
- LiLa Search Platform
- SPARQL Access Point
- TextLinker

## What's Next

- Discussion and Conclusion

# What's Next

## Discussion and Conclusion



- ▶ Automatic disambiguation of linking for textual resources

# What's Next

## Discussion and Conclusion



- ▶ Automatic disambiguation of linking for textual resources
- ▶ Meta-linking of LOD resources: images, geodata and prosopography for the ancient world

# What's Next

## Discussion and Conclusion



- ▶ Automatic disambiguation of linking for textual resources
- ▶ Meta-linking of LOD resources: images, geodata and prosopography for the ancient world
- ▶ Multilingual interoperability and Lemma Banks for other languages (LiITA, etymological resources)

# What's Next

## Discussion and Conclusion



- ▶ Automatic disambiguation of linking for textual resources
- ▶ Meta-linking of LOD resources: images, geodata and prosopography for the ancient world
- ▶ Multilingual interoperability and Lemma Banks for other languages (LiITA, etymological resources)
- ▶ Integrating NLP Tools

- ▶ Automatic disambiguation of linking for textual resources
- ▶ Meta-linking of LOD resources: images, geodata and prosopography for the ancient world
- ▶ Multilingual interoperability and Lemma Banks for other languages (LiITA, etymological resources)
- ▶ Integrating NLP Tools
- ▶ Exploiting explicit information stored in knowledge graphs to fine-tune LLMs



# Thank you

Let's interlink!



## LiLa: Linking Latin

Università Cattolica del Sacro Cuore  
CIRCSE Research Centre



[info@lila-erc.eu](mailto:info@lila-erc.eu)



<https://github.com/CIRCSE>



<https://lila-erc.eu>



[@ERC\\_LiLa](https://twitter.com/ERC_LiLa)



Largo Gemelli 1, 20123 Milan, Italy



This project has received funding from the European Research Council (ERC) under the European Union's Horizon 2020 research and innovation programme - Grant Agreement No. 769994.